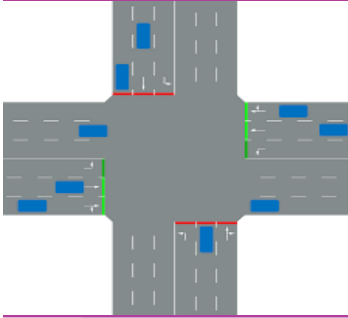


Civil Department

23<sup>rd</sup> Sep 2019



Smt. S. R. Patel Engineering College

# Workshop Report

## Workshop

on

## “Signal Design using Webster Method”

### Objectives:

The main objective of this Workshop to provide a deep knowledge about Intersection Volume Count study and using this data design the 2-Phase Signal design.

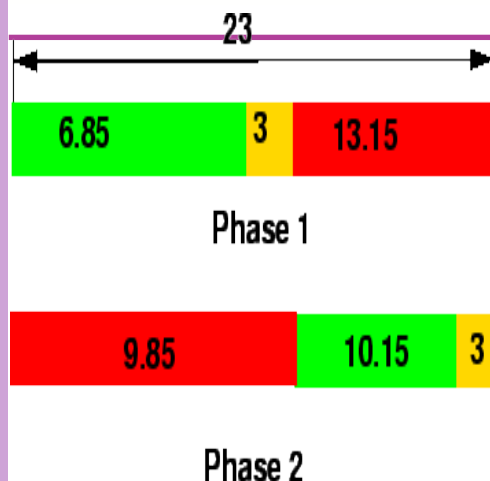
### Summary

The main objective of this Workshop to provide a deep knowledge about Traffic Engineering Survey and Calculate Present flow at Intersection and using this data design the 2-Phase Signal design by Webster Method.

The idea of organizing this Workshop is to make the audience aware about the fundamentals and key concepts traffic engineering Intersection volume count survey and analysis present flow at intersection, Saturation flow and design fixed time signal design using Webster Method at APMC– Intersection, Unjha.

### Topics :

1. Introduction of Signal Design
2. Methods of Signal Design
3. Prepare Intersection volume Count Survey Form.
4. Intersection Volume Count Study at APMC-Intersection Unjha.
5. Analysis of collected data
6. Design 2-Phase Signal Design using Webster Method.



Optimum Cycle Length : (Webster Method)

$$C_0 = \frac{1.5L + 5}{1 - Y}$$

$C_0$  = Optimum Cycle time

$L$  = Total lost time per cycle (in seconds)

**Workshop Participant :** Workshop was organized for students of 7th semester Civil Engineering . There are 53 students were present in Workshop.

**Coordinator:**  
**Prof. H. V. Patel**